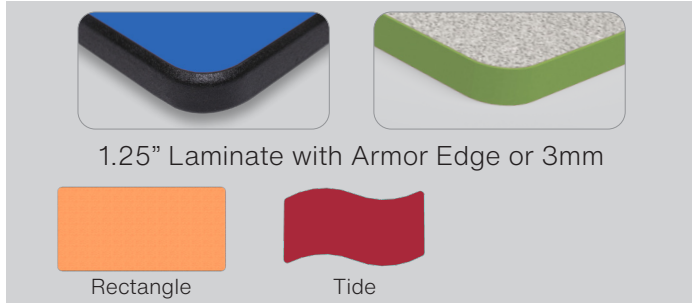


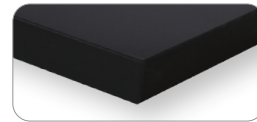
Top Options



1.75" Hardwood



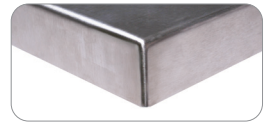
Rectangle



1" Phenolic



Rectangle



1.625" Stainless Steel



Rectangle

Frame Color Options



Smooth Silver

Black (optional)

Blue (optional)

Green (optional)

Orange (optional)

Purple (optional)

Red (optional)

Frame Construction



- 16-gauge heavy duty fully steel frame and legs with 10-gauge mounting plates
- Black adjustable stretcher bar runs along middle for table support
- Stretcher bar is screwed to top with #10 pan screw and bolted to the frame



3" Heavy-Duty Locking Caster w/ Brake (Standard)

LOBO & TORO Comparison Quick View Chart

	Legs	Color Frames	H-Brace Frame	Lead Times	Shipping Cost	Customized Heights
LOBO Tables	Bolted to Frame	No	No	2-6 weeks	Lower	No
TORO Tables	Welded to Frame	Yes (fixed legs only)	Yes	6+ weeks	Higher	Yes

Top Options

1.25" Laminate with Armor Edge or 3mm

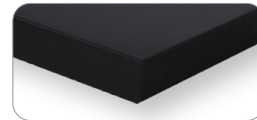
Clover Horseshoe Trapezoid Kidney Round Rectangle



1.75" Hardwood



Rectangle



1" Phenolic or Epoxy*

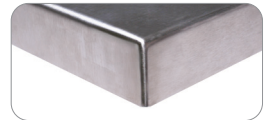


Trapezoid



Rectangle

*Epoxy not recommended on casters and voids warranty.



1.625" Stainless Steel



Rectangle

Frame Color Options

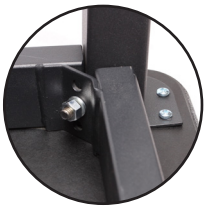


Smooth Silver
(N/A on -ABP legs)

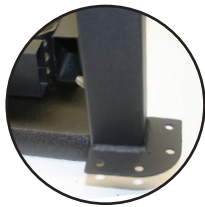


Black

Frame Construction



Legs are bolted onto mounting bracket.
 Welded plate and #10 screws secure leg to top



Gussets
 (Standard on Hardwood tops.
 Optional on all other rectangle and round top types)

- 14-gauge steel legs bolted to a 16-gauge steel frame
- Black or smooth silver frame
- Frame ships knocked down
- Lead time: 2 - 6 weeks (some stock frames)
- Works great in general classrooms (light to medium-duty use)



Leg Options



-FX
 1.5" Square Fixed
 28.25"



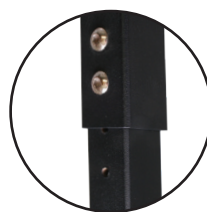
-ADJ
 1.5" Square Adjustable
 22.25"-36.25"



-ABP
 2" Big Paw Adjustable
 22.25"-36.25"



-ALR
 2" Round Adjustable
 22.25"-36.25"



Adjustable legs adjust in 1" increments



1.375" Nylon Glides (Standard)



2.5" Grand Hank Glides (Optional)



3" Heavy-Duty Locking Caster w/ Brake (Optional)



2" Soft Tread Caster w/ Brake (Optional)

LOBO & TORO Comparison Quick View Chart

	Legs	Color Frames	H-Brace Frame	Lead Times	Shipping Cost	Customized Heights
LOBO Tables	Bolted to Frame	No	No	2-6 weeks	Lower	No
TORO Tables	Welded to Frame	Yes (fixed legs only)	Yes	6+ weeks	Higher	Yes

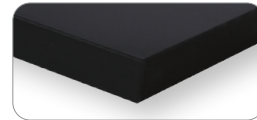
Top Options



1.75" Hardwood



Rectangle



1" Phenolic or Epoxy*

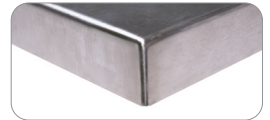


Trapezoid



Rectangle

*Epoxy not recommended on casters and voids warranty.



1.625" Stainless Steel



Rectangle

Frame Color Options



Smooth Silver



Black



Blue (optional on fixed frames)



Green (optional on fixed frames)



Orange (optional on fixed frames)

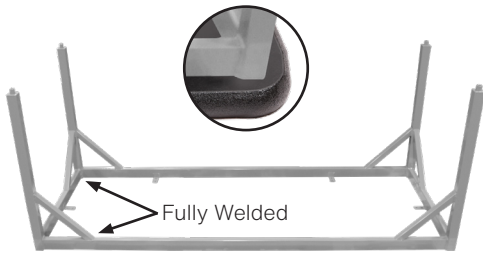


Purple (optional on fixed frames)



Red (optional on fixed frames)

Frame Construction



Optional Gussets Shown

Gussets only available on rectangle and round tops

- Glides are standard
- 14-gauge steel legs welded to a 16-gauge steel frame
- Frame ships assembled
- Lead Time: 6+ weeks (made to order)
- Customization available: H-Brace, built-in shelves, custom heights
- Ideal for heavy-duty lab/classroom applications



Built-in full or half shelf (optional)

Leg Options



-ADJ
1.5" Square Adjustable
20.25" - 36.25"



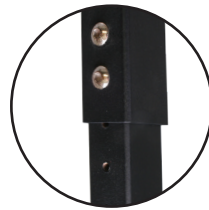
-ALR
2" Round Adjustable
20.25" - 36.25"



-FX
1.5" Square Fixed
28.75"



-FXR
2" Round Fixed
28.75"



Adjustable legs adjust in 1" increments



1.375" Nylon Glides (Standard)



2.5" Grand Hank Glides (Optional)



3" Heavy-Duty Locking Caster w/ Brake (Optional)



2" Soft Tread Caster w/ Brake (Optional)